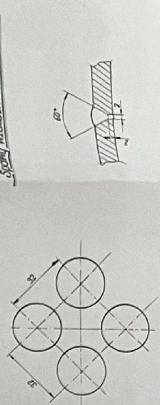
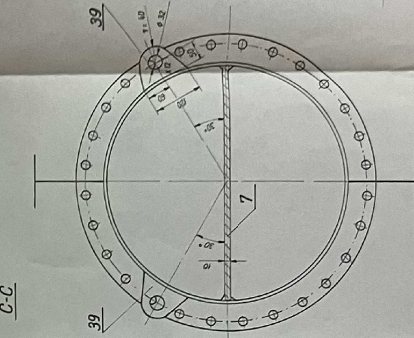
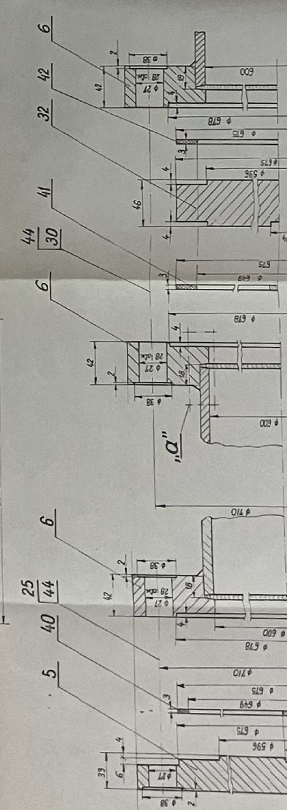
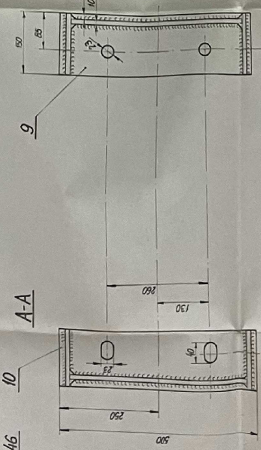
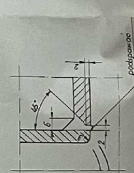
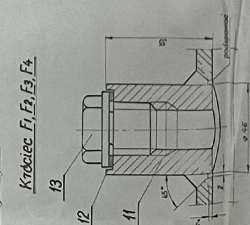


F_4
 C
19 23 28 35 45
 Wspisanie króćców A,B,C,D,E
 Króćiec F₁, F₂, F₃, F₄



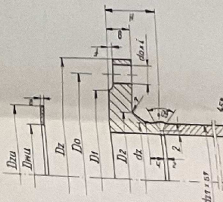
Rozmieszczenie obwodów
w dnie situm

Ściegody spawania tutek poz. 34

Unapi:

- [illegible]

Grouped analysis	D_{max}	P_{max}	kohnen											
			D_1	D_2	D_3	D_4	D_5	D_6	D_7	D_8	D_9	D_{10}		
A	250	16	273	47	425	320	288	70	127	8	10	37	73	16
B	150	46	1631	168	195	172	294	55	1001	74	3	6	169	15
C	150	40	1631	6.5	235	190	158	118	1001	24	22.0	3	168	15
D	150	40	602	6.5	165	175	102	74	16	101	20.4	3	107	16
E	150	40	602	6.5	165	175	102	74	16	101	20.4	3	107	16

1, B, C, D, E.